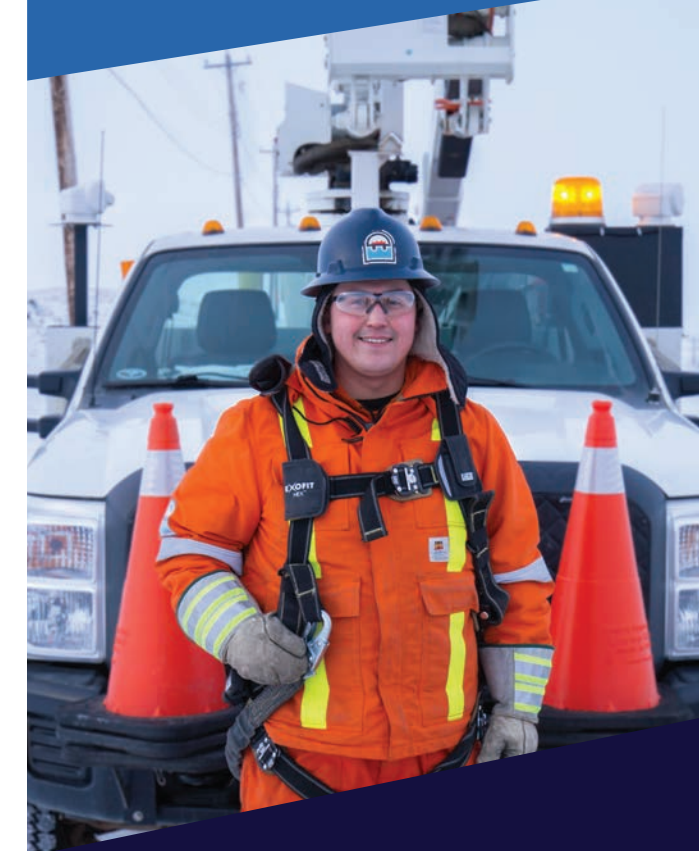




Power Line Safety for Contractors



Contact Us
www.qec.nu.ca

QEC EMERGENCY LINE:
1-867-222-3807

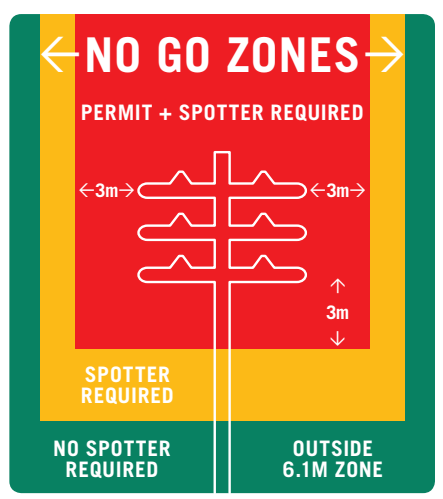


Equipment Operators

Ensure workers stay at least 10 metres (33 feet) away from equipment operating near power lines.

To avoid contact with power lines, dump trucks on project sites **must** drop their box after dropping off a load.

Stay alert! Many incidents happen at the end of the day when workers are tired or rushing to finish a job.

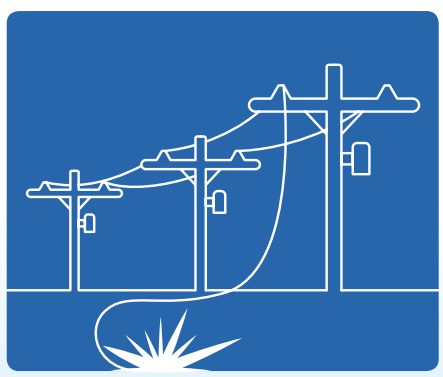


Spotters

Operators of high reach vehicles and dump trucks must use a spotter to ensure that equipment does not come within 3 metres (10 feet) of overhead power lines.

Safety precautions for spotters:

- Have no other duties while the equipment is working near power lines.
- Be in position with full view of the operator.
- Be close enough for hand signals to be seen clearly.
- Warn the operator when machinery approaches the power lines. Operators may not be able to judge the distance.



Emergency Procedures

If wires contact a vehicle or the ground, always assume they are energized.

If the machinery you are operating contacts an energized line, move it away from the line to break contact. If this can't be done, stay in the vehicle or on the machine.

Call the **QEC 24 Hour Emergency Line at 1-867-222-3807** as well as the **RCMP**. It is essential to keep everyone back at least 10 metres (33 feet) from the incident.

Only a local QEC worker on-site can isolate and ground the damaged equipment. QEC will confirm when the power is off and tell you when to exit the vehicle safely.



Safety on the Job Site

Power line safety is everyone's responsibility.

The majority of power line contacts happen at construction sites and are often preventable.

Be conscious of your surroundings and take precautions when using dump trucks and high reach vehicles like cranes, telehandlers, loaders, backhoes, boom trucks and scissor lifts.

Construction and Connections

Qulliq Energy Corporation (QEC) requires advanced notice if your project involves working within 3 metres (10 feet) of a power line and when your project requires a connection.

Please ensure QEC is fully informed of:

- Project start and end dates
- Project locations
- Any changes to project plans



ᖃᑦᑕᑦᑎᑦ ᐅᐱᑦᑎᑦᑎᑦᑎᑦᑎᑦ ᑎᑦᑦᑕ
Qulliq Energy Corporation
Société d'énergie Qulliq
Qulliq Alruyaktuqtunik Ikumatjutiit



QEC Power Shut Off

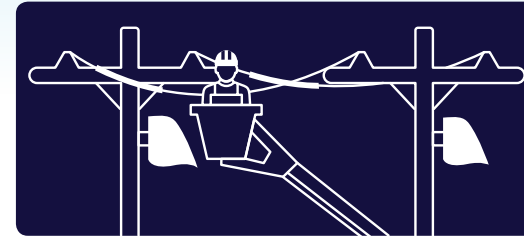
Power must be shut off when working within 3 metres (10 feet) of energized power lines.

Contact QEC at 1-866-710-4200 to determine when and where overhead or underground power lines will need to be de-energized during your project.

QEC will determine if "insulating protective cover-up" on the overhead power lines is adequate, or if a power shut-off is required to complete the project.

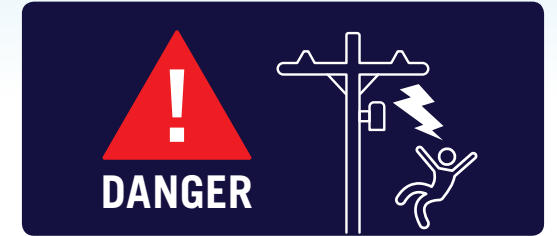
When necessary, QEC will complete a switching order to de-energize work areas and issue a Work Protection Code (WPC) Permit. A client signature is required to invoke and release the permit.

When work is complete contractors **must** contact QEC to restore power to the work area.



Safety for Construction Workers

Workers who operate machinery or equipment that could contact overhead power lines need to look up and identify potential danger. Ensure that all people and equipment stay at least 3 metres (10 feet) away from power lines to prevent an incident. Electricity can jump to you or your equipment if you are too close to a power line.



Safety Precautions

- Post warning signs to keep job personnel alert for accidental electrical contact.
- Do not stockpile, load, or unload any material near or underneath power lines.
- Whenever possible, locate access roads and ramps away from power lines.
- Treat all power lines as energized until confirmed by a QEC employee that they are de-energized.

